

Applied Forces to PORT : 6 Lashings, Longlink, 13mm, MBL 200kN (calculated MSL 80kN)
 2 Stopper, HEB200 x 300 = 2 x 160kN

Applied Forces to STBD : 6 Lashings, Longlink, 13mm, MBL 200kN (calculated MSL 80kN)
 2 x Stopper, HEB200 x 300 = 2 x 160kN

Applied Forces to FWD : 2 Stopper, HEB200 x 300 = 2 x 160kN

Applied Forces to AFT : 2 Stopper, HEB200 x 300 = 2 x 160kN

Welding Principles



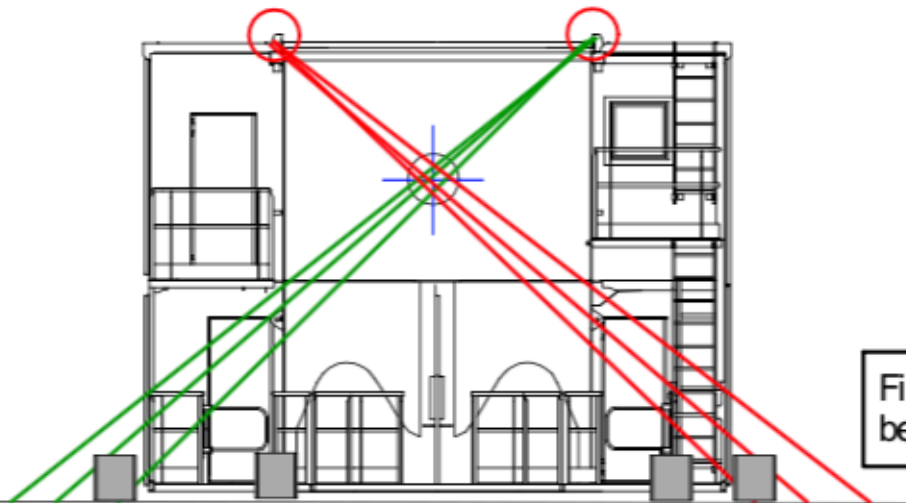
$$a = 0,4\text{cm}^2$$

$$L = 2 * 20\text{cm}$$

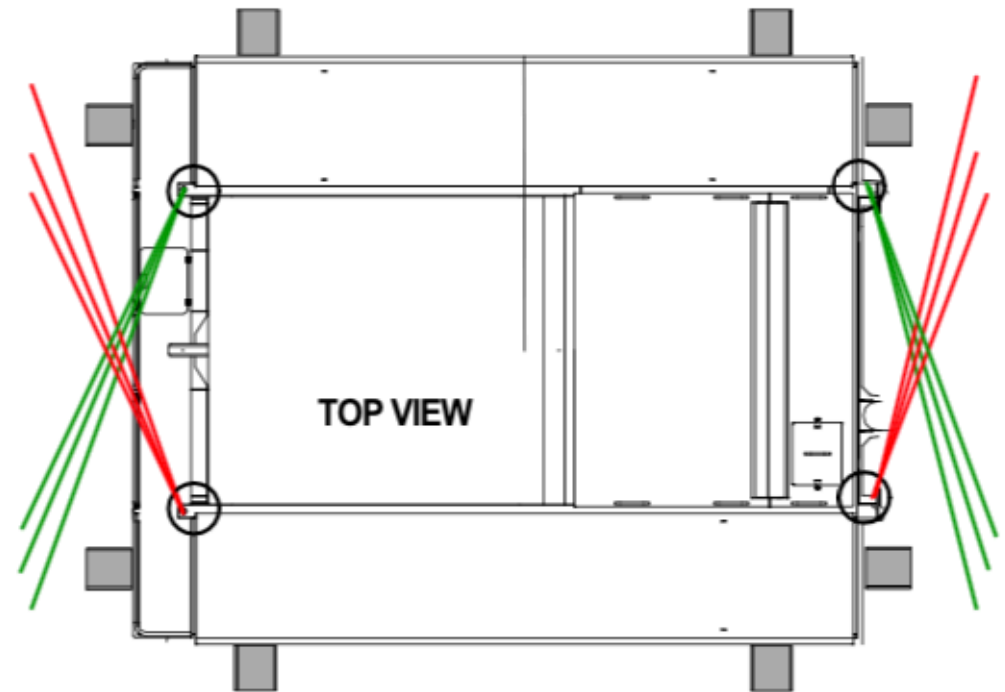
$$Q = 0,4 * 40 = 16\text{cm}^2$$

$$\text{MSL} = 10 * 16 = 160\text{kN}$$

FRONT/REAR VIEW



TOP VIEW



Final Arrangement of Lashings must be Subject of Stairs and Rails of Unit

Lash Arrangement for Superstructure
 Gottwald G HMK 6407 - 97,5 m/tons

Lashing arrangements

Scale: n. t. s.

Vers.: 1.0